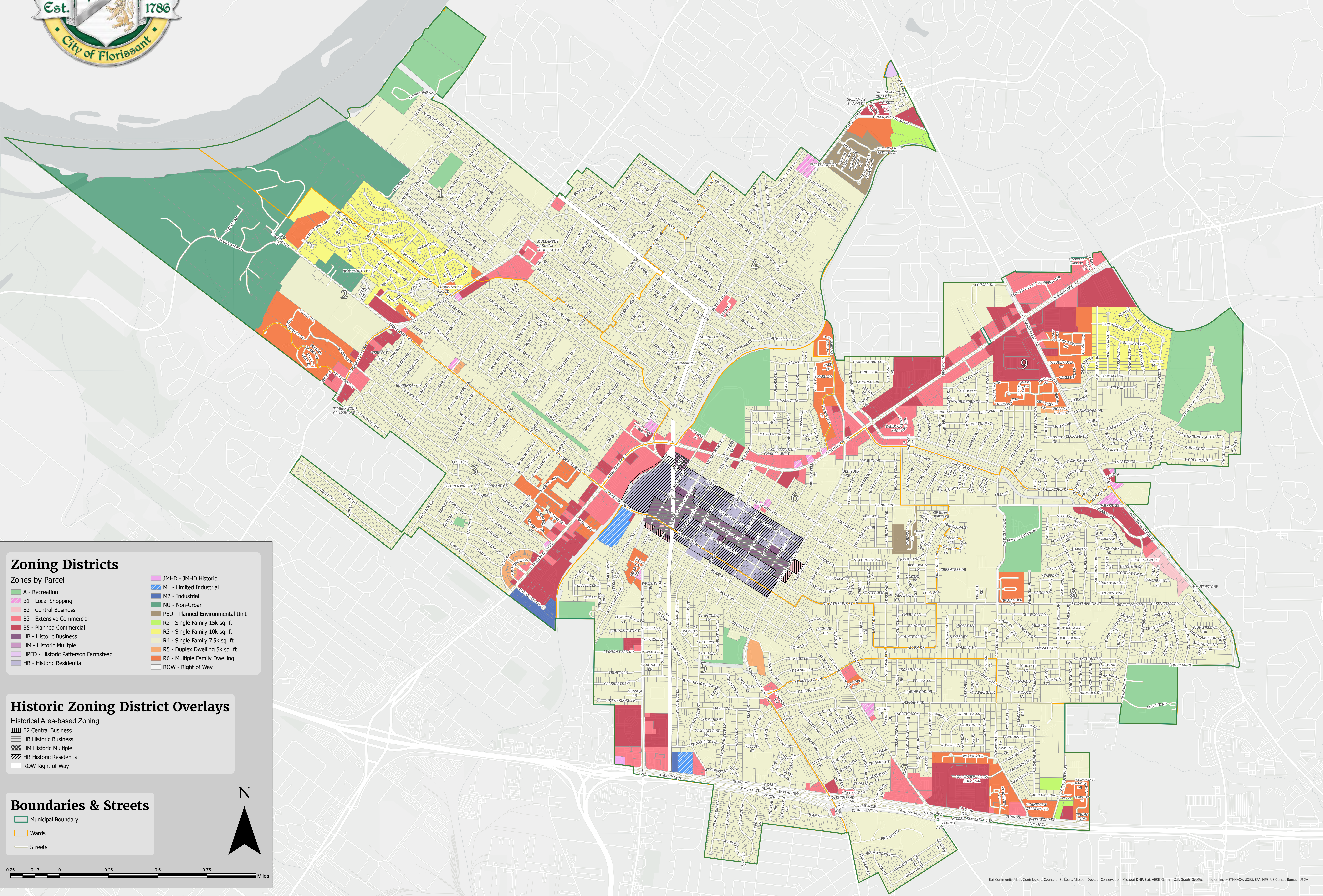




Zoning Districts

City of
Florissant
St Louis County, Missouri



Zoning Districts

Zones by Parcel

A - Recreation	JMHD - JMHD Historic
B1 - Local Shopping	M1 - Limited Industrial
B2 - Central Business	M2 - Industrial
B3 - Extensive Commercial	NU - Non-Urban
B5 - Planned Commercial	PEU - Planned Environmental Unit
HB - Historic Business	R2 - Single Family 15k sq. ft.
HM - Historic Multiple	R3 - Single Family 10k sq. ft.
HPFD - Historic Patterson Farmstead	R4 - Single Family 7.5k sq. ft.
HR - Historic Residential	R5 - Duplex Dwelling 5k sq. ft.
	R6 - Multiple Family Dwelling
	ROW - Right of Way

Historic Zoning District Overlays

Historical Area-based Zoning

B2 Central Business
HB Historic Business
HM Historic Multiple
HR Historic Residential
ROW Right of Way

Boundaries & Streets

Municipal Boundary
Wards
Streets

N

0.25 0.13 0 0.25 0.5 0.75 1 Miles

Esri Community Maps Contributors, County of St. Louis, Missouri Dept. of Conservation, Missouri DNR, Esri, HERE, Garmin, SafeGraph, GeoTechnology, Inc, METUNASA, USGS, EPA, NPS, US Census Bureau, USDA

Properties are regularly Re-Zoned. Ensure that you consult with a Building Official from the Public Works Department to confirm the current Zoning before making any business decisions. This map shows Zoning by Parcel with an overlay of some Historic Districts. There are apparent differences in the "Historical Center" of Florissant due to Historic Districts being classified as Area-based Zoning. Area-based Zoning does not mean that a single parcel has multiple Zoning classifications. The most restrictive Historic District classification is in place for the Parcels where there were multiple classifications to choose from.